



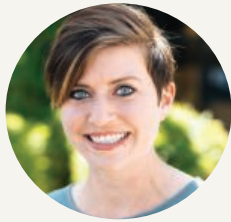
Dedicated to the early detection and prevention of cervical cancer around the globe for the women who need it most.

And we haven't stopped.

2020 ANNUAL REPORT



Letter from CureCervicalCancer Founder and Executive Director



Dear Friends & Supporters,

In mid-March, as country borders started closing and the WHO declared coronavirus to be a global health emergency, the CureCervicalCancer team made the difficult decision to return home from Kenya in the midst of a "See & Treat" training. Uncertain of when it would be safe to travel again, we quickly pivoted our attention on how to best support our "See & Treat" clinics around the world as they braced for the looming devastation of Covid-19.

Still, we did not lose sight of our mission.

Every year, cervical cancer takes the lives of over 300,000 women.

Even in the midst of a global pandemic.

As already limited resources shifted to meet the urgent and unpredictable needs of the pandemic, the underserved women that we serve would face the risk of losing access to life-saving screening and treatment.

We are most proud to report that our international ground partners and "See & Treat" clinics continue to work tirelessly to bring life-saving care and treatment to the women who need it most. They adopted new Covid-conscious protocols to safely reach women in rural and urban clinics and in some of the most remote regions of the world through our mobile clinics. Our 627 trained healthcare professionals are screening and treating women every single day.

Our global community has been forced to face the reality that we depend on one another for our most valuable asset – our health. Our individual choices affect everyone around us; for better or worse, we are in this together.

So many of you have generously supported our mission to bring life-saving care to thousands of women across the world. Women whom you will never meet. We thank you for your support, which we depend on, and we ask that you continue to fight with us for a world in which no woman will die of a preventable disease.

With a big heart,

Patricia Gordon, MD & Rebecca Lepsik, RN



"CLINIC IN A SUITCASE"

"Clinic in a Suitcase" – The largest costs for a "See & Treat" program are the initial expenses of equipment such as the thermal ablation system to treat precancerous lesions. CCC provides this equipment along with all of the necessary consumable supplies (speculums, gloves, acetic acid, bleach, etc.) until the clinic can operate independently.



GLOBAL IMPACT

WOMEN SCREENED: **140,253**

WOMEN TREATED: **8,440**

HEALTHCARE PROFESSIONALS TRAINED: **627**

COMMUNITY HEALTH VOLUNTEERS TRAINED: **162**

SUSTAINABLE CLINICS: **100**

COUNTRIES REACHED: **9**



ESTABLISH – We identify the highest need communities around the globe, provide the necessary equipment for "See & Treat", and establish permanent cervical cancer prevention clinics.



EDUCATE – We conduct specialized training for local health care professionals and community health workers, so that they can continue to provide life-saving services to the women in their communities.



EMPOWER – We aim to achieve sustainability by building local capacity. We increase the impact of our community-driven model by leveraging the resources/expertise of national and local ground partners.

CURECERVICALCANCER ADAPTS & INNOVATES TO BRING COVID-CONSCIOUS CARE

CCC supported clinics with the necessary supplies and training to operate safely and effectively. We supported KMET, our ground partner in Kisumu, Kenya, to distribute 12,608 units of personal protective equipment (PPE), including gloves, masks, aprons, and portable hand washing stations. In addition, 53 local Community Health Workers were trained to educate their communities in safe COVID-19 practices, resulting in 16,950 men and women receiving information on how to best protect themselves and their communities from coronavirus.

12,608 PIECES OF PPE
ALONG WITH 40L OF
DISINFECTANT PRODUCT

16,950 MEN AND WOMEN
EDUCATED ON COVID-19
PROTOCOLS

53 COMMUNITY HEALTH
WORKERS TRAINED



CERVICAL CANCER: A GLOBAL HEALTH CRISIS

Every year over 300,000 women die of cervical cancer, women who are often in the prime of their lives. They die due to lack of access to the most basic care from this disease that is nearly 100% preventable.

Cervical cancer is a disease of inequality, with 90% of deaths disproportionately occurring in resource-poor countries.

The WHO predicts that without urgent intervention, deaths from cervical cancer will increase by over 50% in the next two decades.



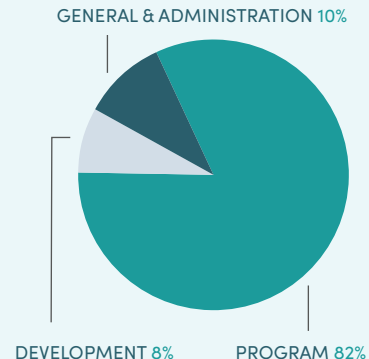
With a Simple, Effective, Scalable Solution

"See & Treat" is a simple, cost-effective procedure to detect pre-cancerous changes with the naked eye using acetic acid (vinegar). The cells can be immediately treated with ablation methods (thermal ablation or cryotherapy) which destroy the pre-cancerous tissue completely in 85-90% of cases.

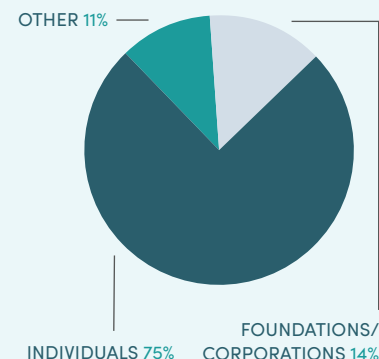
CureCervicalCancer works with ground partners who link us to the community, the healthcare system, and national and local leaders. We train healthcare professionals in "See & Treat" and establish "See & Treat" clinics within already existing healthcare facilities.

We aim to eliminate cervical cancer through a comprehensive approach: reaching women through facility-based and mobile clinic services, increasing awareness within the community, and advocating at the local and national level.

ANNUAL EXPENSES 2020



ANNUAL REVENUE 2020





THANK YOU FOR CONTINUING TO SUPPORT CCC IN BRINGING LIFE-SAVING “SEE & TREAT” TO WOMEN AROUND THE GLOBE.

DIAMOND - \$100,000+

The Joseph Drown Foundation
The Leonard Hill Charitable Trust
The Morris A. Hazan Family Foundation
Irving Kessler and Barbara Anderson
Julie Kavner

PLATINUM- \$50,000+

The Ahmanson Foundation
The Alfred C. Munger Foundation
The Annenberg Foundation
The MacNaughton Family Foundation
Benjamin Gordon
Fern Jennings
Gale Hurd
Kerry and Norah Clark
Wesley Phoa & Margaret Morgan

GOLD - \$25,000+

The Anthem Foundation
The Elizabeth Taylor AIDS Foundation
The International Foundation
The Roddenberry Foundation
Bonnie and David Rickles MD
Collie & Greg Daily
J Andrew and Simone McEntire
Richard and Sandra Jacobson

SILVER - \$10,000+

Anne Vandenabeele and Annmarie Eldering
Arnie and Judy Fishman
Barton J. And Phyllis C. Cohen Charitable Foundation
Buchalter APC (Richard Ormond, Bernard Bollinger, Michael Wachtell)
Capital Group Companies Charitable Foundation
Gillian & John Wagner
Jodi Shelton and Jerry Rogers
Joel Cornfield, MD and Judy Laner
John Einck MD
Ken Marks
Lenore Pridham
Leopold Wyler
Marcia Lustgarten
Mark Gordon
MEDGYN
Patricia Heaton & David Hunt
Phyllis Yale and Tucker Taft
Peter Micelli and Jennifer Lang MD
The Rieschel Foundation
Robert and Joanie Hall
Samuel and Tracey Byrne
Timothy O'Connor MD and Victoria M. O'Connor
Victoria and Brian Klein

BRONZE - \$5,000+

Amy and Stan Baratz
Arno Mundt MD
Clifford Merlo MD and Marilyn Wexler Ph.D.
David and Susan Gersh
Delain and Dana Kemper
Heidi and Damon Lindelof
Hornik Family Foundation
Jack and Michelle Giarraputo
Jeffry Rosmarin
John and Heather Botti
Kirt Wagner
Linda May and Jack Suzar
Laurie and Matt Coleman
Murray Lappe
The Phase Foundation
Sally and David Lang
Stanley and Joyce Black
Family Foundation
Susan and Bill Dake
Yuval Bar-Zemer and Gudrun Gotschke
Nancy Fleming

FRIEND- \$2,500+

Jill & Loren Bough
Donna & Larry Cohen
Crescent Rotary Club Foundation of Greensboro
Lynne & Jimmy Dewitt
Nancy Fleming
Aleks Istanbulu
Elizabeth and Stuart Moore
Rosenthal Family Foundation
Alan & Sherie Schneider
Peter & Cathy Spano
Barry Borden & Lois Swinski
Roz and Elliot Vogelfanger
Renee & Brian Wilson
Kelly & Kevin Welsh
Judy and Kurt Vinson

SUPPORTER- \$1,000+

Ricki Alon
Barbara & Richard Barnhart
Melissa Blake
Katherine Boles & Barney Brawer
Kristy Tully Bottoms
Darren & Jenny Bowes
Diane & Greg Branch
Jeffrey & Sandra Bruss
Gretchen and Stephen Burke
Andrew & Jacqueline Caster
Robert and Phyllis Ching
Rachel & Jerome Cornfield MD
Peter Cowie
Glen Dake
Julia & Jim Davidson (Storm Castle Foundation)
Courtney Desmond
DeeDee Dorskind
David Given & Cameron Carr
Bonnie and Gary Goldish
Mark Goldsmith
Elizabeth Gottainer
Jean Gordon MD & Ron Greenwald MD
Arlis & Erwin Grossman
Anne Hasse
Randee Hilborne
Andy & Janice Hill
Lonnie Levi Israel
Len & Nancy Jacoby
Marilyn Jones & Mitchell Kaplan
Richard Keller
Kayne Anderson Capital Advisors Foundation
Jordan & Nicola Kerner
Rachel Levin
Courtney & Edward Loeb
Peter & Josefine Loewenberg
Roger Lowenstein
Geraldine Maisel
Stan & Amy Maisel
Nora Manella
Steve Nudelman
Otting Family Charitable Foundation (Right place)
Roger Quinton and Rachel Sapir-Quinton
Adam Rosenfeld
Jerry Rotman
Sally & Tim Ryan
Ron de Salvo
Deborah & Bobby Sharpe
Rick Siedband and Carol Sarnat
Elizabeth Skinner
Andrea & David Tracy
Betsy & Sanford Weinstein
Bea & Leighton Welch
Maud Welles
Steve White & Sheri Singer
Lisa & Dan Zelson
Julie von Zerneck

With the support of our Board of Directors:

Patricia S. Gordon, MD; Judy Carmel;
Nancy Fleming, CNM, PhD; Ben Gordon;
Judy Laner; Cathy MacNaughton, MBA;